

Mini-Course- Chronic Care Management and Remote Patient Monitoring 101

Moderator: Bonnie Britton, Reconnect4Health

Panelists:

Tonya Delph, Appalachian Regional Health

Melissa Pierce, WellSpan Health

Libby Ruhlman, Western Maryland Health System

Lorraine Valeriano, Lehigh Valley Health Network

➤ Critical Components Of CCM & RPM

Identify Use Cases:

- Clinical Patient Selection Criteria
- Financial Patient Selection Criteria

Develop Conceptual Model:

- Device management
- CCM & RPM clinical services

Develop Clinical Workflows:

- Patient Identification, Enrollment & Referral Workflow
- Patient Installation & Education Workflow
- Alert Review & Escalation Workflow
- De-installation Workflow

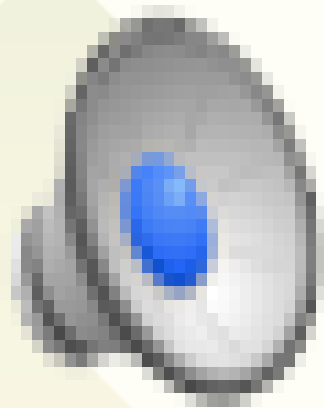
ROI/Scalability

- Data Collection
- Evaluation Plan
- Commitment from CFO

➤ **CCM & RPM Use Cases**

What are some of the unique CCM & RPM use cases your organization identified & implemented?

Was there a unique use case & why?



➤ **CCM & RPM Conceptual Models**

Does your organization provide CCM & RPM services and device management internally?

OR

Does your organization outsource CCM & RPM services and device management?

OR

Does your organization use a combination model?

What rationale was used to determine your model of care?

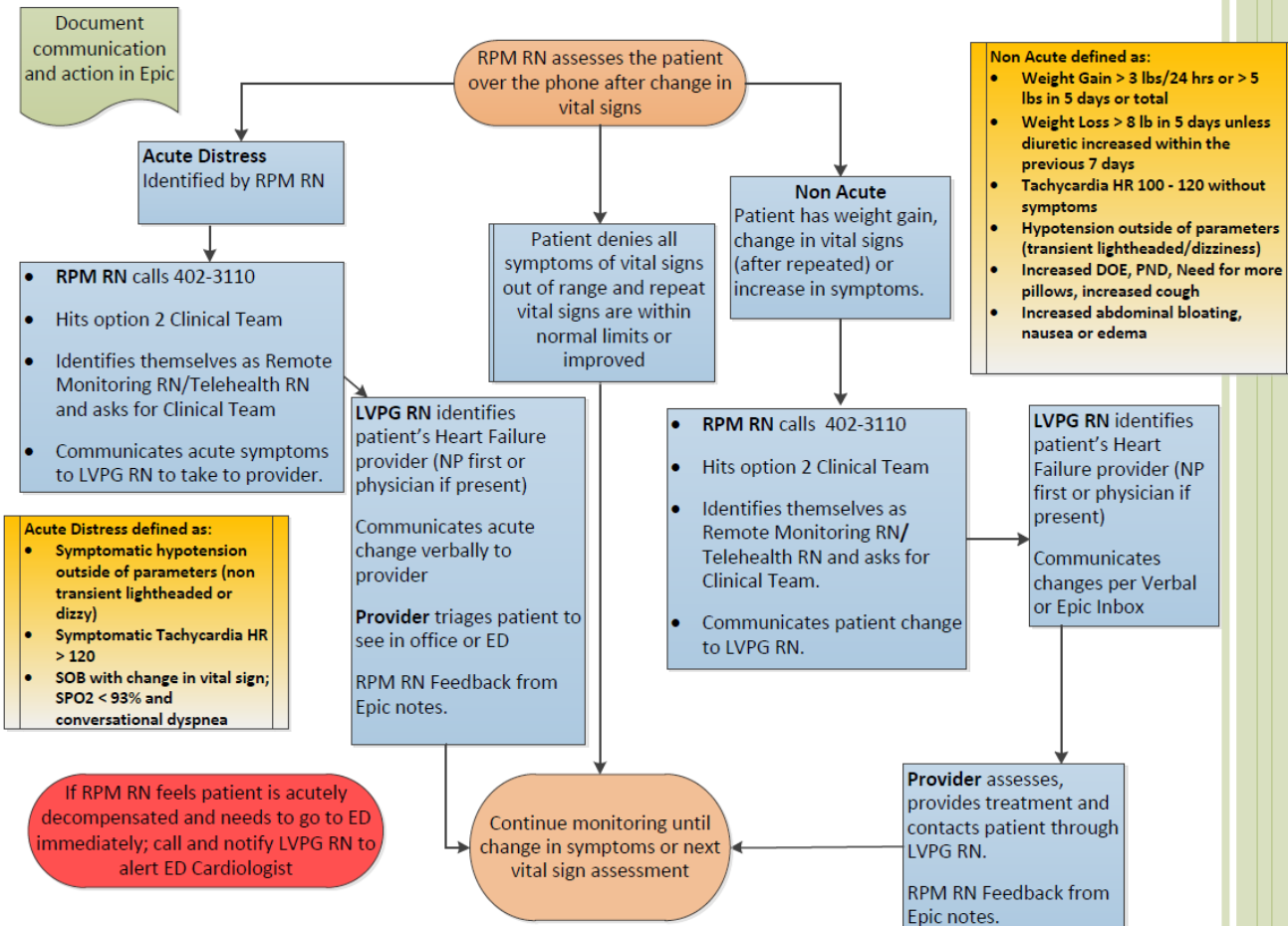
➤ **CCM & RPM Clinical Workflows**

Briefly describe your current workflows and then answer these questions:

Which workflow is the most successful & why?

Which workflow could be improved & why?

CHF Remote Patient Monitoring – LVPG Cardiology Communication





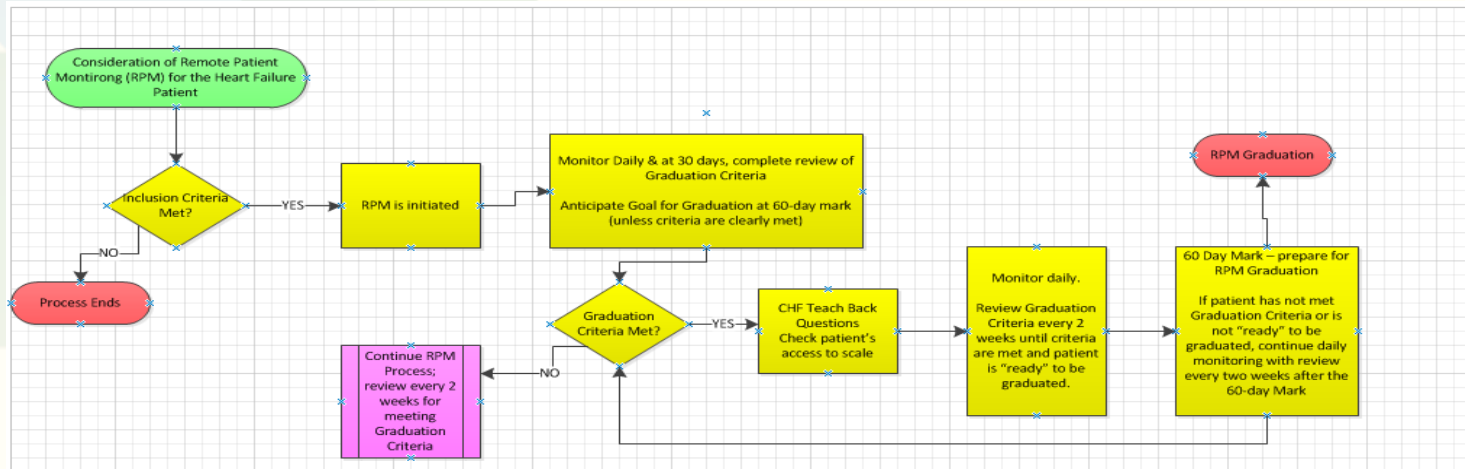
ROI & Scalability

Has your organization demonstrated a financial ROI?

If not, what are the most important data points your organization collects & analyzes to demonstrate a ROI for scalability?

➤ Technology

What words of wisdom would you share with our audience so they are successful in selecting the best CCM & RPM partner?



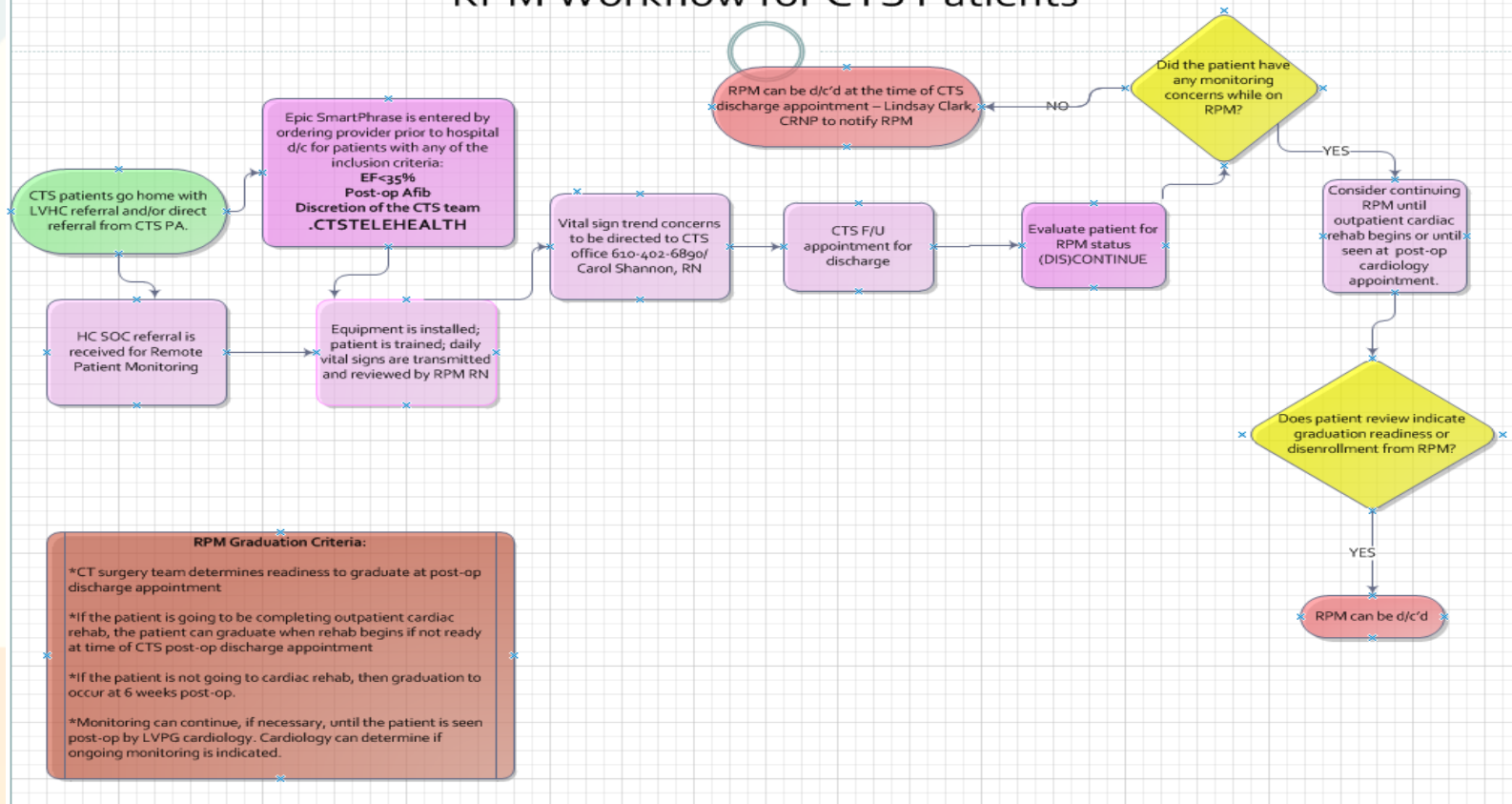
Inclusion Criteria:

- * CHF Diagnosis
- * LVPG Provider (Cardiology or PCP)
- * LVH Risk Score >3; HCC RAF Score
- * Capital Blue Cross/Highmark/MSSP- ALL AHA Stage C and/or NYHA Class II/III/IV
- * Able to test independently or with committed assistance to test

Graduation Criteria:

- *Vital Sign trend stability
- *Frequency of ED/OBS/INPT use during RPM episode including reason for need
- *Testing Compliance
- *Appointment Compliance
- *Demonstrates ability to test independently of RPM Program support
- *Demonstrates knowledge through Teach Back
- * Patient/Provider Request
- *Level of Care change (SNF, hospice, death)
- *Absence of LVPG provider

RPM Workflow for CTS Patients



Questions





Contact Information

Melissa Pierce

mpierce2@wellspan.org

717.812.6290

Lorraine Valeriano

Lorraine.valeriano@lvhn.org

610-509-5621

Tonya Delph

tdelph@arh.org

606-216-4950

Libby Ruhlman

eruhlman@wmhs.org

937-269-1328