



ECHO Autism

Amanda Bennett, MD, MPH

April 15, 2018

Mid-Atlantic Telehealth Resource Center Summit



What is ECHO Autism?

University of Missouri's Thompson Center for Autism and Neurodevelopmental Disorders

\$15-million HRSA funding for Autism Intervention Research Network for Physical Health (AIR-P)/Autism Treatment Network (ATN) pilot and multi-site study



Curriculum



- What is ASD?
- While You Wait...
Screening & Referral
- Sleep and Autism
- Irritability, Autism and
Medication Use
- Constipation and Autism
- ADHD, Autism and
Medication Use
- Anxiety, Autism and
Medication Use
- Parent Support
- Resources – Local State,
Regional, and National
- Common Behavior
Strategies in ASD, What is
ABA?
- Feeding Issues in Autism
- What is an IEP?

ECHO Autism Research Study@ CHOP

January 2017 – November 2017

- 6-Month Intervention
 - Twelve 2-hour ECHO Autism clinics, 2 per month
 - Outcomes:
 - PCP Screening and Identification of ASD Symptoms
 - PCP Management of Medical & Psychiatric Comorbidities
 - PCP questionnaires and clinic chart reviews – baseline, 3m, 6m, 9m
- Preliminary Study Results:
 - PCPs demonstrated improvements in:
 - **Self-efficacy** in ASD screening and management
 - Adherence to AAP **autism screening** guidelines
 - Use of ASD-specific **resources**
 - PCPs reported high **satisfaction**

ECHO[®] Autism Clinic

First and Third Thursday

1.5 hour clinic

Introductions 10 minutes
Case #1 35 minutes
Didactic 20 minutes
Wrap Up 25 minutes



Developmental Behavioral Pediatrician
Amanda Bennett, MD, MPH



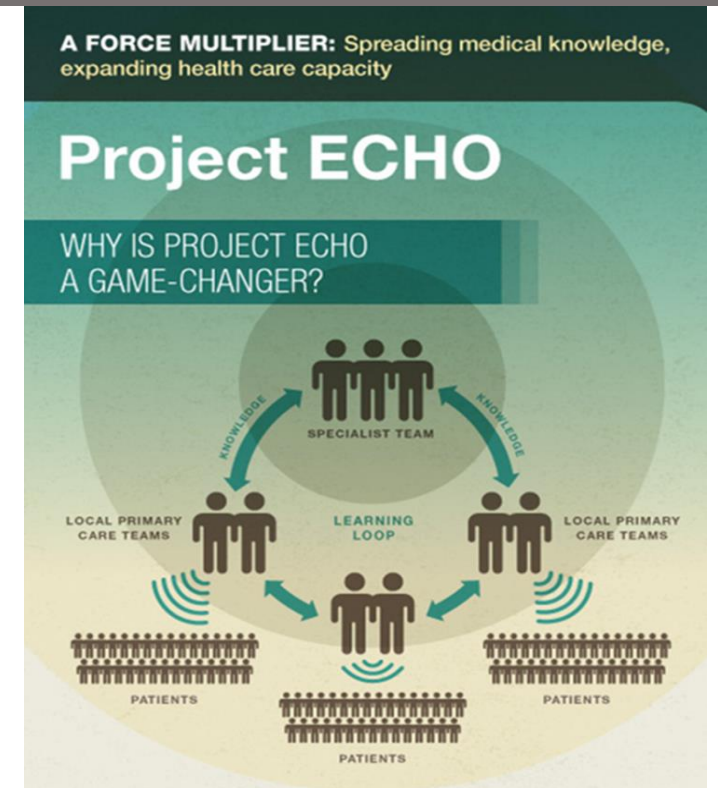
Clinical Psychologist
Judith Miller, PhD



Social Worker
Susannah Horner, LCSW



Parent Expert
Amy Kelly, MBA, MNM



Hub team

- Developmental Behavior Pediatrician
- Clinical Psychologist
- Social Worker/ Community Resource Specialist
- Parent Expert

Lessons Learned

- Funding:
 - 2017 ECHO Autism fully funded by HRSA subcontract
 - 2018 ECHO Autism currently unfunded (“in-kind”) labor of love
 - Actively working with Development to identify funding source

Lessons Learned

- Funding:
 - 2017 ECHO Autism fully funded by HRSA subcontract
 - 2018 ECHO Autism currently unfunded (“in-kind”) labor of love
 - Actively working with Development to identify funding source
- Outreach:
 - CME and MOC Part 4 credit enticements
 - Partnered with CHOP Primary Care Network, local AAP chapters, former training programs, etc.
 - E-blasts yielded ↑ interest, few PCPs, lots of non-medical provider interest

Lessons Learned

- Funding:
 - 2017 ECHO Autism fully funded by HRSA subcontract
 - 2018 ECHO Autism currently unfunded (“in-kind”) labor of love
 - Actively working with Development to identify funding source
- Outreach:
 - CME and MOC Part 4 credit enticements
 - Partnered with CHOP Primary Care Network, local AAP chapters, former training programs, etc.
 - E-blasts yielded ↑ interest, few PCPs, lots of non-medical provider interest
- Operation:
 - ↓ provider interest/participation during flu season
 - ?? Clinics held over “lunch hour”

Challenges

- Participation (post research study)
- Identifying case presentations in advance
- CME/MOC

Why we continue?

- Opportunity to contribute evidence
 - Multi-site trial ending summer 2018 – results pending
- Evidence of need:
 - PCPs crave support for patients pre/post ASD diagnosis
 - Parents frequently seek PCPs with knowledge (“expertise”) in ASD
- “Goose-bump” moments

Thank you!