



Telegenetics in Underserved Communities

REBECCA KALTMAN, MD

ELIZABETH STARK, MS,CGC

TARA BIAGI, MS, CGC

BRIE GARNER

HANNAH AREM, PHD

ALLISON MCHENRY, MPH

RANDI ABRAMSON, MD

The faces of hereditary cancer



Facts

Great disparities in health care exist, particularly in Washington, DC

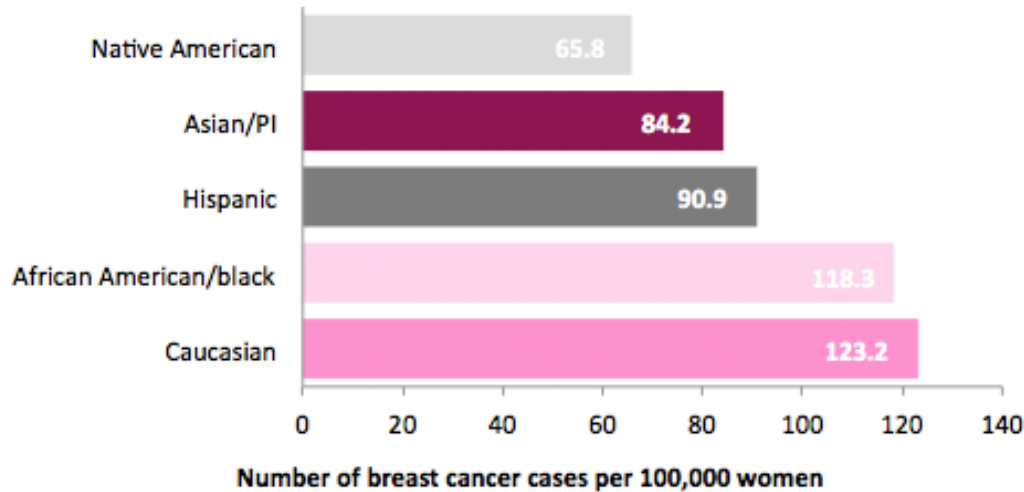
Access to cancer genetic counseling and testing is limited by:

- Scarce nationwide
- Requires physician referral
- Centralized at tertiary care centers

Effective prevention exists for women with hereditary cancer syndromes

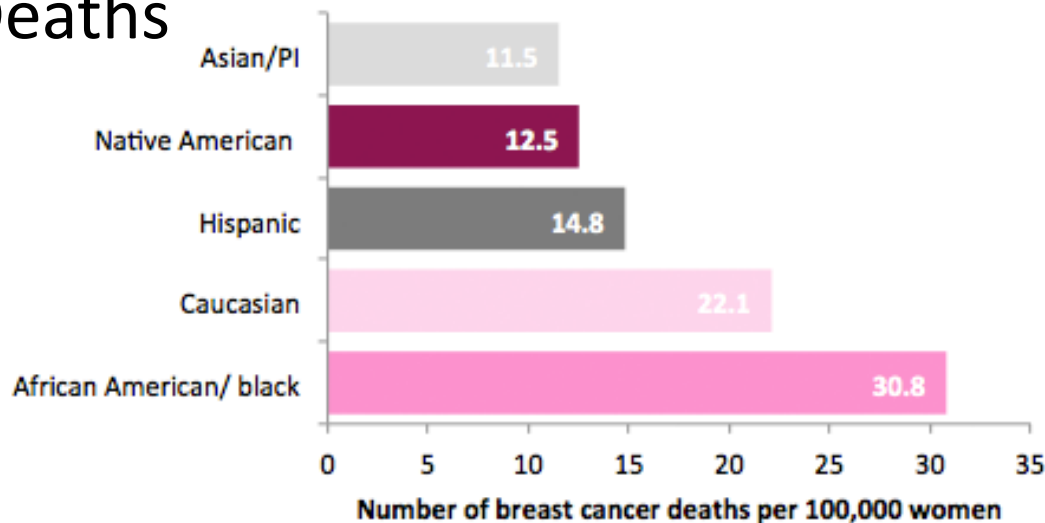
Telegenetics not inferior to in-person

Cases

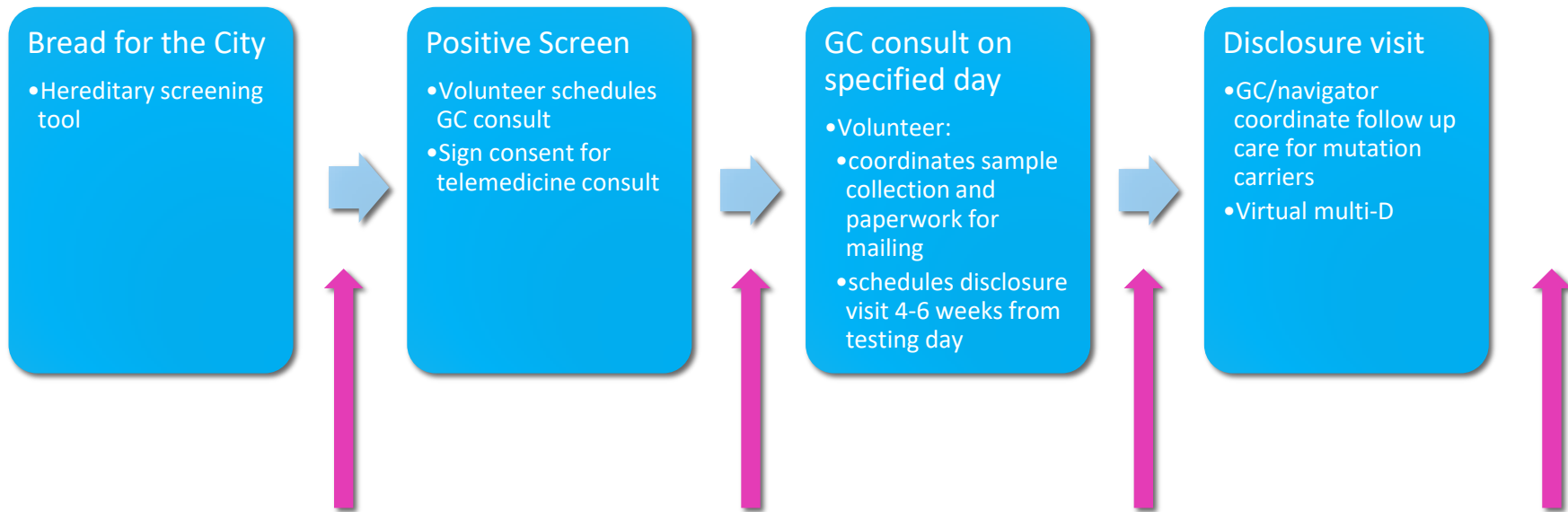


- *Socioeconomic resources*
- *Delivery of care*
- *Genetics*

Deaths



Tele-Genetic Counseling Outreach



E-health interventions/surveys to optimize the process

Findings and future directions

BARRIERS ARE COMMON

PILOT DATA WILL INFORM NEXT STEPS



RPHCP Research Team and Collaborators

Research Registry

- Allison McHenry, MPH

Panel Testing Project

- Anya Frost, MS IV

Social Media Project

- Sarit Klein, MS III
- Allison McHenry, MPH

GI Outreach Project

- Dustin Marks, MS II
- Marie Borum, MD, Division of Gastroenterology

Thermography Project

- Murray Loew, PhD, Dept of Biomedical Engineering
- Christine Teal, MD

SureTouch Projects

- Joe Peterson, MD
- Roxanne Jamshidi, MD
- Rachel Brem, MD
- Richard Amdur, PhD

Tele-Genetic Counseling Outreach Project

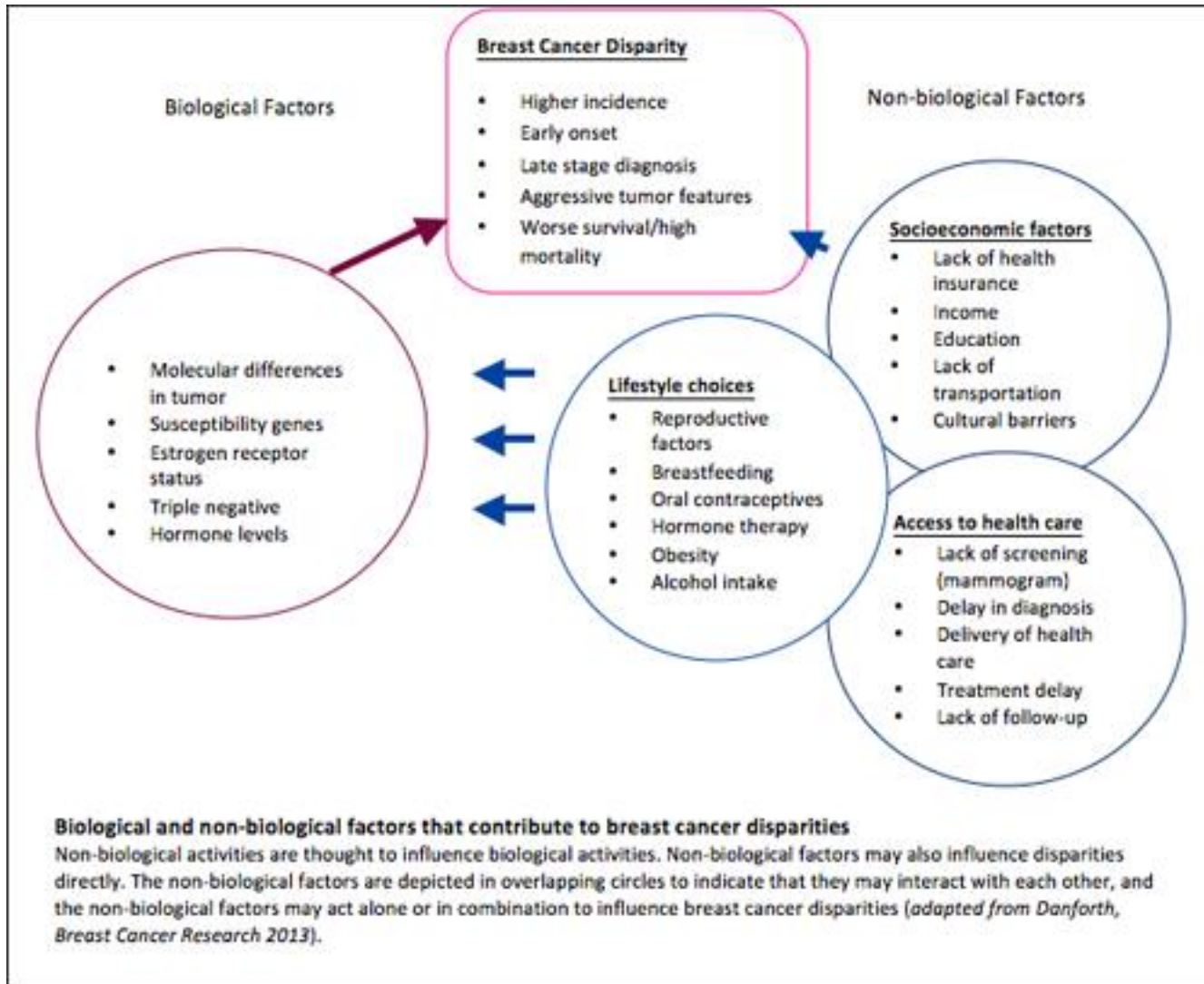
- Bread for the City
- Brem Foundation
- Hannah Arem, PhD

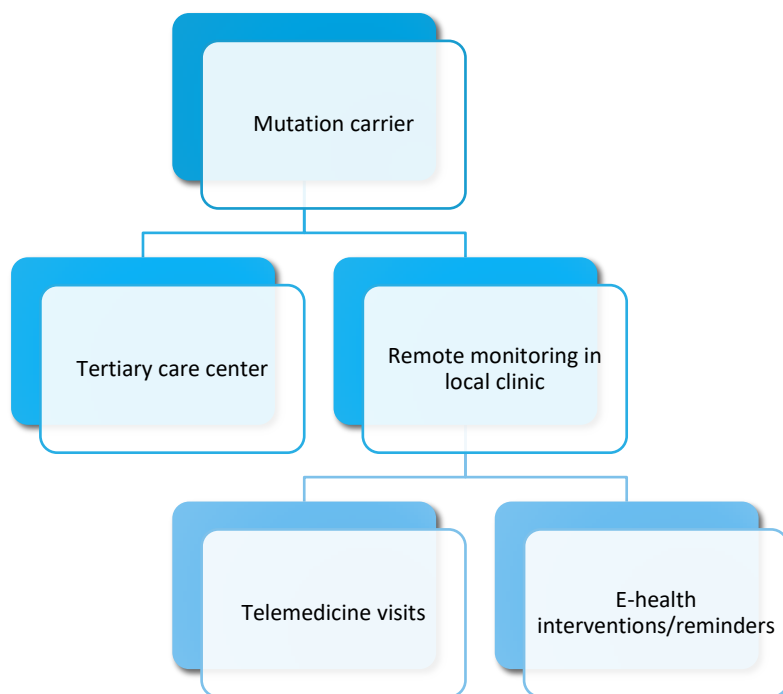
Multi-D Collaborators

- Breast Surgery
 - Christine Teal, MD
 - Anita McSwain, MD
 - Claire Edwards, MD
- Dermatology
 - Brandon Mitchell, MD
- Endocrinology
 - Nisha Nathan, MD
- Gastroenterology
 - Marie Borum, MD
 - Timothy Dougherty, MD
- GU oncology
 - Jianqing Lin, MD
- High risk specialist
 - Farzana Walcott, MD
- Neurology
 - Francois Boller, MD
- OBGYN/Gyn Onc
 - Micael Lopez-Acevedo, MD
 - Roxanne Jamshidi, MD
 - Nancy Gaba, MD
 - Alivia Aron, NP
- Plastic Surgery
 - Joanne Lenert, MD
 - Teresa Buescher, MD
- Primary Care
 - Elizabeth Bluhm, MD
- Reproductive Endocrinology
 - David Frankfurter, MD
 - Sasmira Lalwani, MD
 - Kathryn Humm, MD
- Urology
 - Kelly Chiles, MD

With special thanks to Ruth Uppercu Paul and Dr. Constance Battle, without whom, none of this would be possible.







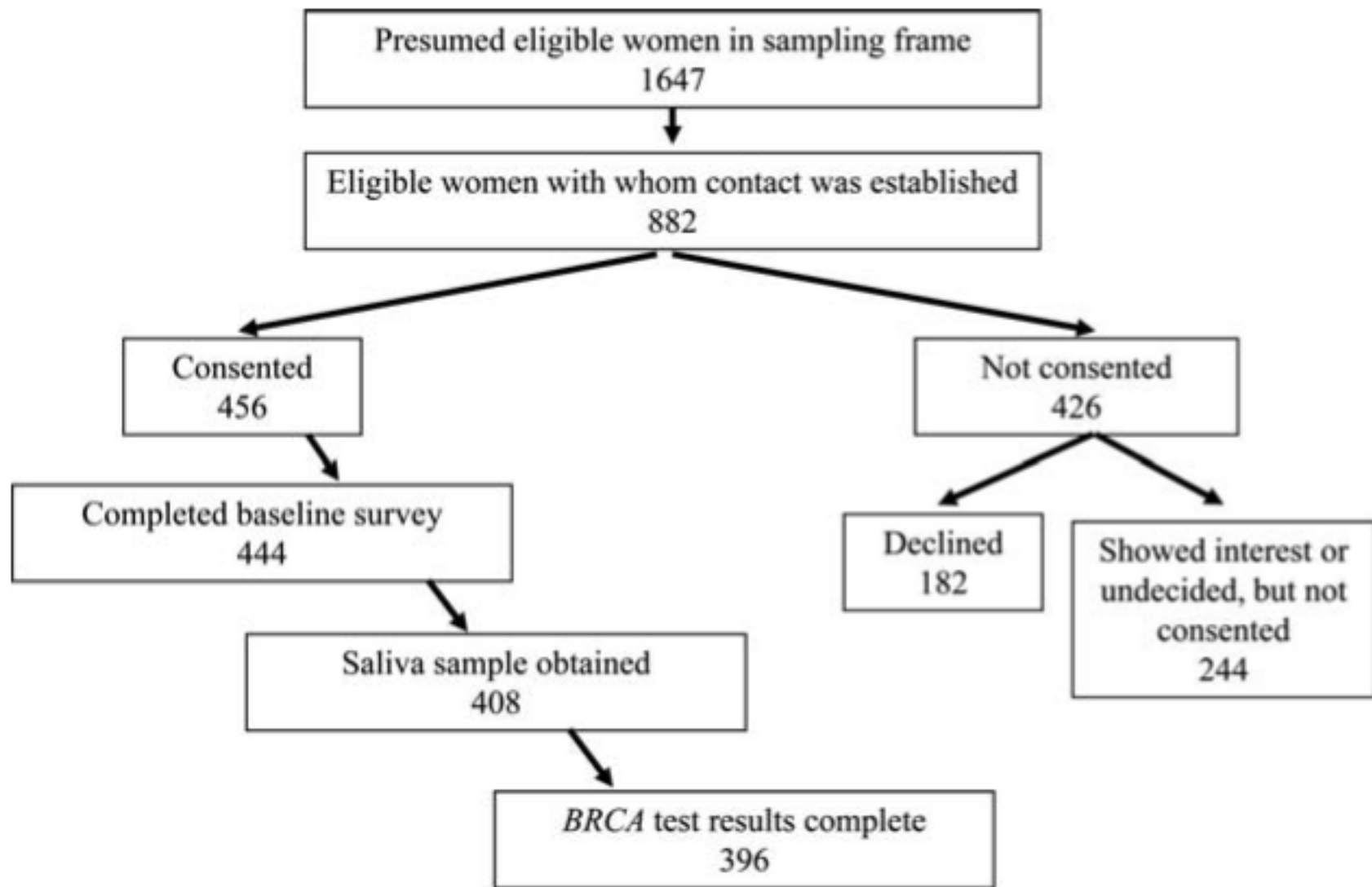


Figure 1. Recruitment schema.



MOFFITT study

Original Article

A High Frequency of *BRCA* Mutations in Young Black Women With Breast Cancer Residing in Florida

Tuya Pal, MD¹; Devon Bonner, BS¹; Deborah Cragun, PhD¹; Alvaro N.A. Monteiro, PhD¹; Catherine Phelan, MD, PhD¹;
Lily Servais, MS²; Jongphil Kim, PhD¹; Steven A. Narod, MD³; Mohammad R. Akbari, MD, PhD³;
and Susan T. Vadaparampil, PhD, MPH¹