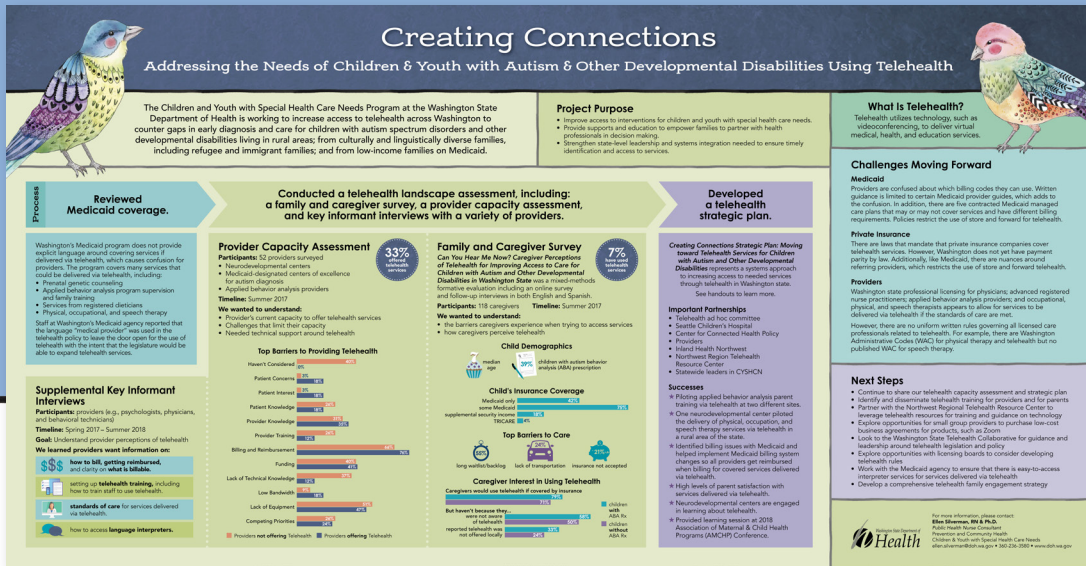
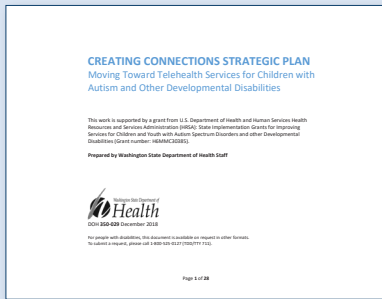


Resources

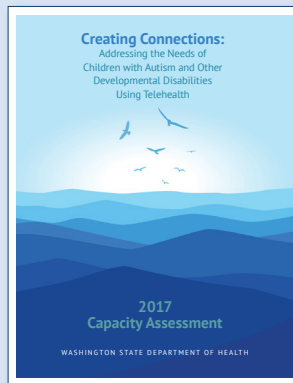


Creating Connections Strategic Plan: Moving Toward Telehealth Services for Children with Autism and Other Developmental Disabilities (PDF)



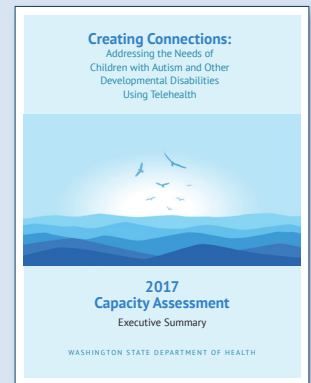
doh.wa.gov/Portals/1/Documents/Pubs/350-029-TelehealthStrategicPlan.pdf

2017 Telehealth Capacity Assessment – Full Report (PDF)



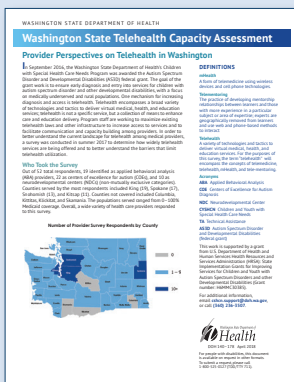
doh.wa.gov/Portals/1/Documents/Pubs/970-224-2017THCapacityAssessment.pdf

2017 Telehealth Capacity Assessment – Executive Summary (PDF)



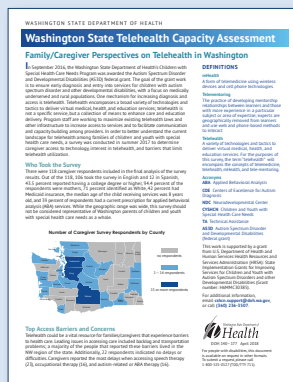
doh.wa.gov/Portals/1/Documents/Pubs/970-225-AS3D2017THCapacityAssessmentExecutiveSummary.pdf

2017 Telehealth Capacity Assessment – Provider Survey Brief (PDF)



doh.wa.gov/Portals/1/Documents/Pubs/140-178-2017AS3DTHProviderSurveyBrief.pdf

2017 Telehealth Capacity Assessment – Caregiver Survey Brief (PDF)



doh.wa.gov/Portals/1/Documents/Pubs/140-177-2017AS3DTHCaregiverSurveyBrief.pdf



For more information, please contact:

Ellen Silverman, RN & Ph.D.
Public Health Nurse Consultant
Prevention and Community Health
Children & Youth with Special Health Care Needs

ellen.silverman@doh.wa.gov
360-236-3580
www.doh.wa.gov

For people with disabilities, this document is available on request in other formats. To submit a request, please call 1-800-525-0127 (TDD/TTY call 711).

